

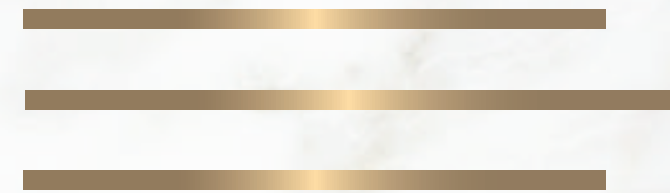
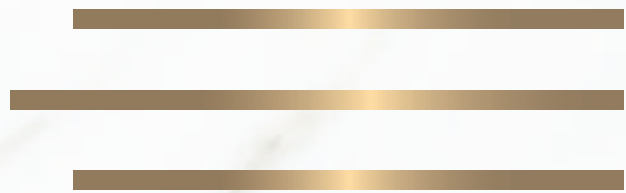


**EVERGREEN**

*Smart Homes*



**EVERGREEN**  
*Smart Homes*





Three horizontal gold lines are positioned in the top left corner of the image.

## A GREAT LOCATION FOR A GREAT LIVING

PECHS Block-2 is one of the most prime and well-developed residential areas in Karachi, offering a perfect blend of comfort, convenience, and connectivity. With easy access to major landmarks, top educational institutes, healthcare facilities, and shopping centers, PECHS Block-2 ensures a modern and vibrant lifestyle. It stands as a symbol of urban living, offering a secure environment and a promising future in the heart of the city.

# EXCELLENT LOCATION

Evergreen Smart Homes is a wonderful project located in an ideal location at Plot #71-J, PECHS Block-2, Karachi. A great location for great living, Evergreen Smart Homes is destined to become one of the most sought-after vertical sanctuaries in Karachi.

SCAN QR CODE FOR LOCATION





# 4 BED DRAWING & DINING ROOM GROUND PLUS 2 HOUSE UNITS PENTHOUSE

## THE FIRST-CLASS APPROACH TO LIVING

Rising from the basement to the 2nd floor, Evergreen Smart Homes offers well-crafted, modern apartments, while its uppermost levels feature premium, super-comfortable penthouses. The project also includes secure basement parking and a thoughtfully designed residential environment. Evergreen Smart Homes is bringing a remarkable lifestyle experience to its residents.



IDEAL  
ACCESSIBILITY



LUXURIOUS  
PENTHOUSES



SPACIOUS  
APARTMENTS



BASEMENT  
PARKING



A Project By:



3G

BUILDERS & DEVELOPERS

Evergreen Smart Homes is a project of 3G Builders, a name known for its strong credibility. With well-planned, fast-track construction and a commitment to maintaining the highest standards of quality, the project is set to be completed within the given timeline.

# EVERGREEN

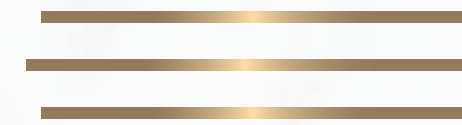
## *Smart Homes*

### FEATURES:

- 🏠 Smart Lights
- 🏠 Smart Keyless Entry
- 🏠 Keyless Chipset  
Main Gate Entry
- 🏠 Keyless Chipset Parking
- 🏠 Hi-Tech Lift

Disclaimer: Developer reserves the right to modify designs, layouts, and specifications anytime.



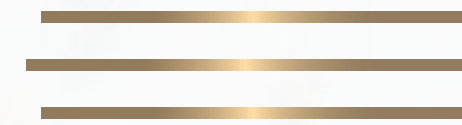


# MASTER BEDROOM

Artful yet sophisticated, The Master bedroom encapsulates modern living with a timeless aesthetic. Owners have the luxury of exclusively designing and decorating the space with their own choice of finishes to make the apartment your dream home.



Disclaimer: Developer reserves the right to modify designs, layouts, and specifications anytime.



## SECOND BEDROOM

Chic yet comforting, the Second Bedroom offers a serene sanctuary designed for pure relaxation. Owners are afforded the privilege of personalizing the palette and materials to perfectly align the space with their bespoke vision of refinement.



Disclaimer: Developer reserves the right to modify designs, layouts, and specifications anytime.

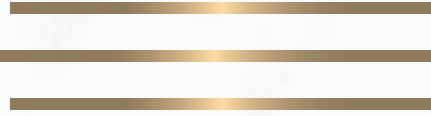


Disclaimer: Developer reserves the right to modify designs, layouts, and specifications anytime.

## THIRD BEDROOM

Elegant yet versatile, the Third Bedroom provides a private retreat infused with contemporary grace. You are invited to select unique textures and superior fittings, ensuring the room reflects your signature style and comfort requirements.



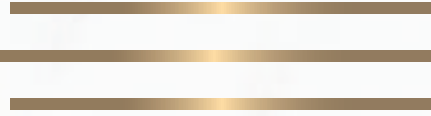


# FOURTH BEDROOM

Refined yet bright, the Fourth Bedroom is a luminous space that inspires tranquility and calm. Enjoy the unique freedom to customize every detail, from the flooring to the fixtures, creating a truly tailored environment.



Disclaimer: Developer reserves the right to modify designs, layouts, and specifications anytime.



# DRAWING ROOM

Regal yet inviting, The Drawing Room is the heart of the home, embodying opulence and stately comfort. Residents are empowered to choose distinct architectural accents and opulent furnishings, crafting a magnificent space for reception and repose.



Disclaimer: Developer reserves the right to modify designs, layouts, and specifications anytime.



## DINING ROOM

Grand yet welcoming, The Dining Room sets the stage for memorable gatherings and sophisticated entertaining. Owners have the unparalleled opportunity to select exquisite wall treatments and lighting to define a truly luxurious culinary setting.



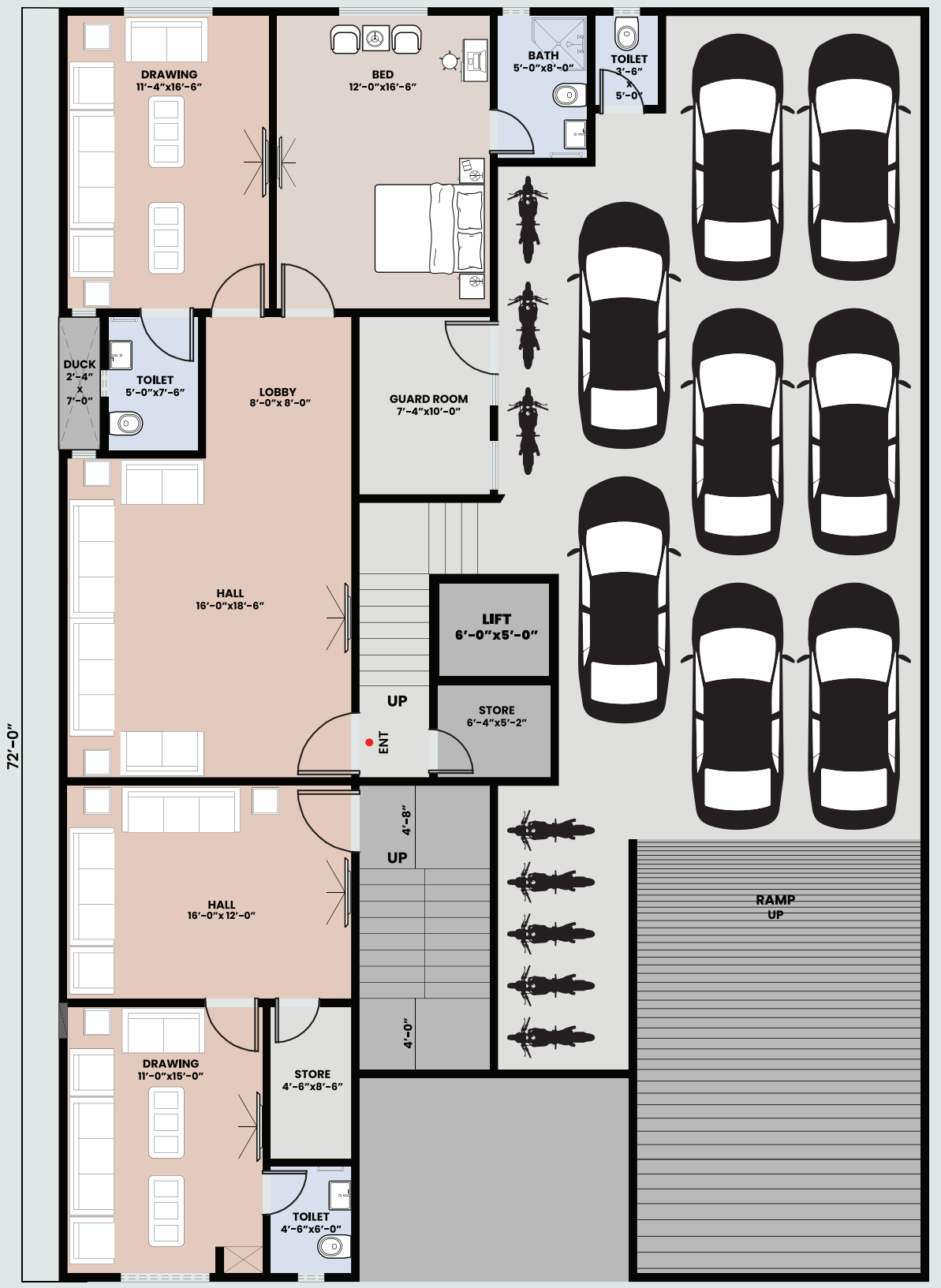
Disclaimer: Developer reserves the right to modify designs, layouts, and specifications anytime.

# APARTMENTS FLOOR PLANS





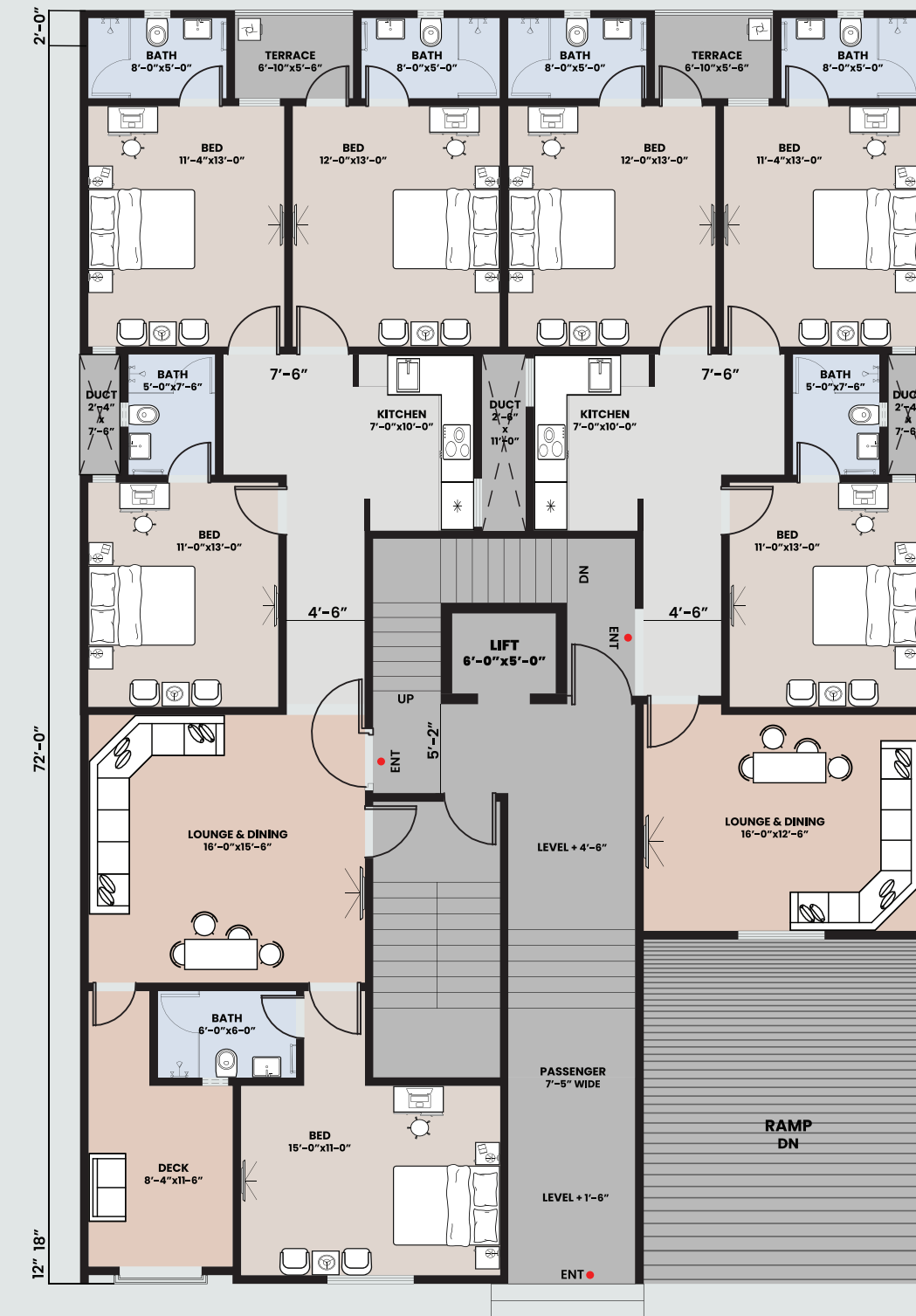
# BASEMENT PLAN



Disclaimer: Developer may modify layouts and floor plans without prior notice.



# GROUND FLOOR PLAN



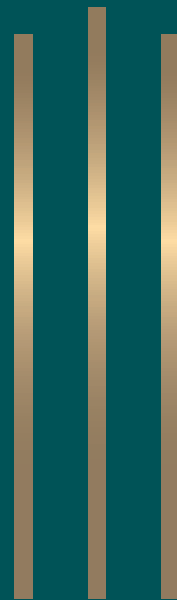
|            |                 |
|------------|-----------------|
| BAS. AREA  | 611.45 sq. ft.  |
| NET AREA   | 1707.29 sq. ft. |
| PARKING    | 191.20 sq. ft.  |
| SERVICES   | 48.80 sq. ft.   |
| TOTAL AREA | 2558.74 sq. ft. |

|            |                 |
|------------|-----------------|
| BAS. AREA  | 1060.06 sq. ft. |
| NET AREA   | 1185.96 sq. ft. |
| PARKING    | 191.20 sq. ft.  |
| SERVICES   | 48.80 sq. ft.   |
| TOTAL AREA | 2486.02 sq. ft. |

Disclaimer: Developer may modify layouts and floor plans without prior notice.



# 1ST & 2ND FLOOR PLAN

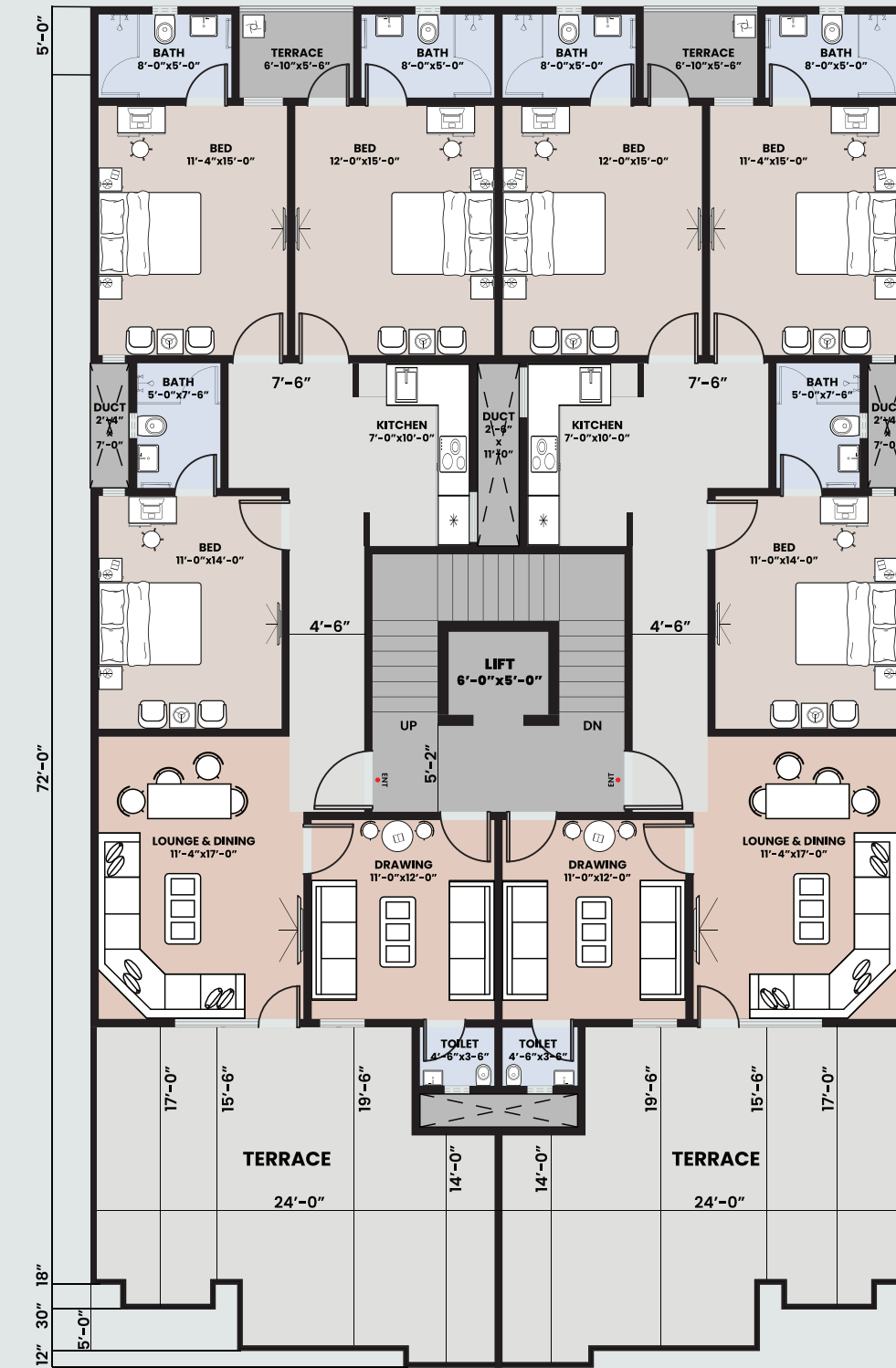
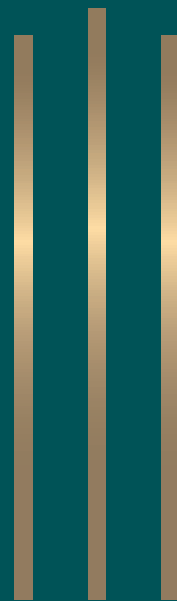


|                   |                        |
|-------------------|------------------------|
| <b>NET AREA</b>   | <b>1940.91 sq. ft.</b> |
| <b>PARKING</b>    | <b>191.20 sq. ft.</b>  |
| <b>SERVICES</b>   | <b>74.36 sq. ft.</b>   |
| <b>TOTAL AREA</b> | <b>2206.47 sq. ft.</b> |

Disclaimer: Developer may modify layouts and floor plans without prior notice.



# PENTHOUSE FLOOR PLAN



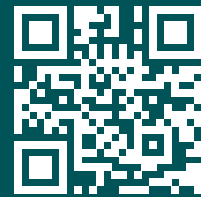
|                   |                        |
|-------------------|------------------------|
| <b>TERR. AREA</b> | <b>424.29 sq. ft.</b>  |
| <b>NET AREA</b>   | <b>1546.00 sq. ft.</b> |
| <b>PARKING</b>    | <b>191.20 sq. ft.</b>  |
| <b>SERVICES</b>   | <b>74.36 sq. ft.</b>   |
| <b>TOTAL AREA</b> | <b>2245.85 sq. ft.</b> |

Disclaimer: Developer may modify layouts and floor plans without prior notice.

A Project By:



BUILDERS & DEVELOPERS



**Contact :**  
03 111 911116-7

**Head Office :**  
Address. Suit # 402, Building no C-60,  
21st Commercial. ST, Phase 2 Extention. , DHA, Karachi

**Site Address :**  
Plot# 71-J, PECHS Block-2, Karachi

[www.3gbuilders.pk](http://www.3gbuilders.pk)

Disclaimer: The views, plans and layout shown are artist's impression only. Evergreen Smart Homes reserves the right to change these specifications, plans and amenities without prior notice. We assure that any such changes made will not, in any way, be detrimental to the quality of the building.