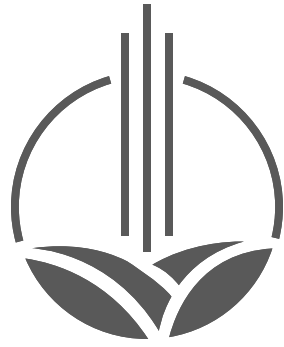




EVERGREEN
CLASSIC



EVERGREEN CLASSIC





WHERE PRIME LOCATION MEETS EXCEPTIONAL LIVING

Evergreen Classic Homes is an exceptional residential development situated at PECHS Block-2, Karachi. Set within a highly desirable neighborhood, the project offers an elevated standard of living where comfort meets convenience. Designed to redefine modern urban residences, Evergreen Classic Homes is poised to emerge as one of Karachi's most distinguished vertical living destinations.



SHAHRAH-E-QAIDEEN

SHAHRAH-E-QAIDEEN

Mehmood Ghaznavi
Park

Main Tariq Road

Jheel Park

SCAN QR CODE
FOR LOCATION



3 BED, DRAWING & DINING ROOM

GROUND PLUS 2 HOUSE UNITS
& ROOF



BEDROOM



BATHROOM



DRAWING ROOM



DINING ROOM



KITCHEN



TERRACE

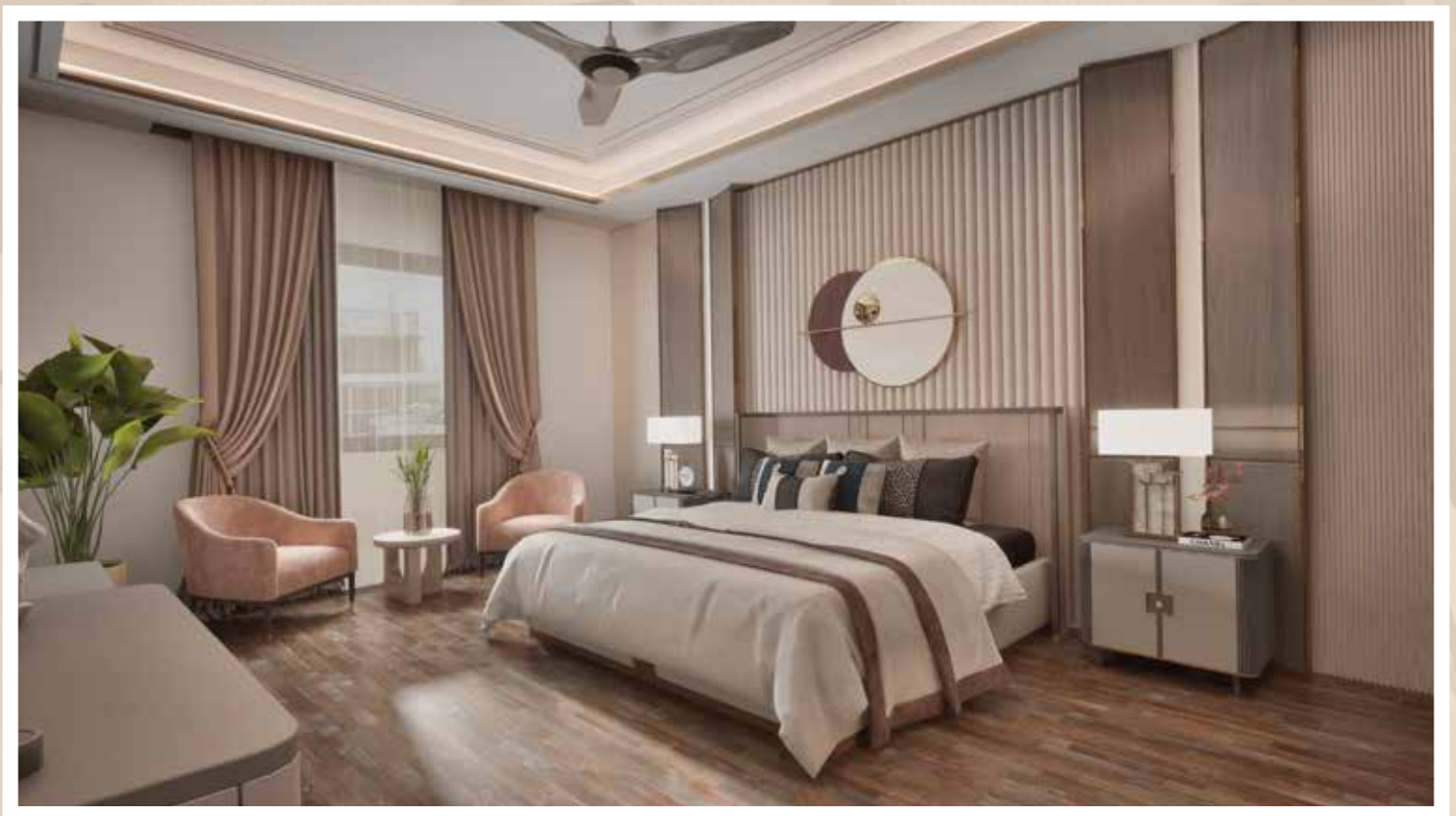






PARENTS ROOM

Elegant and sophisticated, the parents room is designed as a timeless sanctuary for rest and reconnection. This space balances luxury with a sense of deep calm, offering a retreat from the world. With the opportunity to select bespoke finishes and premium textures, parents can curate an atmosphere of understated elegance that perfectly reflects their shared journey and personal taste.



Disclaimer: Developer reserves the right to modify designs, layouts and specifications anytime.



BOYS ROOM

Modern and spirited, the boys room is crafted to be a versatile hub of energy and relaxation. Designed with both function and style in mind, this space adapts to his evolving interests and active lifestyle. By choosing from a range of contemporary finishes and tailored layouts, the room is transformed into a bold, personalized environment that supports both focused study and spirited play.



Disclaimer: Developer reserves the right to modify designs, layouts and specifications anytime.



GIRLS ROOM

Graceful and inspiring, the girls room is envisioned as a luminous sanctuary for creativity and rest. This space provides a delicate balance of charm and functionality, serving as a private canvas for self-expression. With a wide palette of finishes and bespoke design options, the room can be tailored to evolve with her, transforming into a personalized haven that celebrates her unique spirit.



Disclaimer: Developer reserves the right to modify designs, layouts and specifications anytime.



DRAWING ROOM

Formal and distinguished, the drawing room serves as the sophisticated face of the home. Crafted to make a lasting impression, it offers an atmosphere of grandeur and hospitality for welcoming guests. Through a curated selection of premium finishes and architectural details, this space can be transformed into a bespoke gallery of taste, reflecting a lifestyle of prestige and timeless refinement.



Disclaimer: Developer reserves the right to modify designs, layouts and specifications anytime.



LOUNGE & DINING

Seamless and social, the lounge and dining area is designed as a cohesive hub for family life and effortless entertaining. This expansive space prioritizes flow and light, creating a warm backdrop for shared meals and quiet evenings alike. Residents have the creative liberty to select textures and layouts that blend comfort with high-end style, resulting in a refined setting for life's most cherished moments.



Disclaimer: Developer reserves the right to modify designs, layouts and specifications anytime.



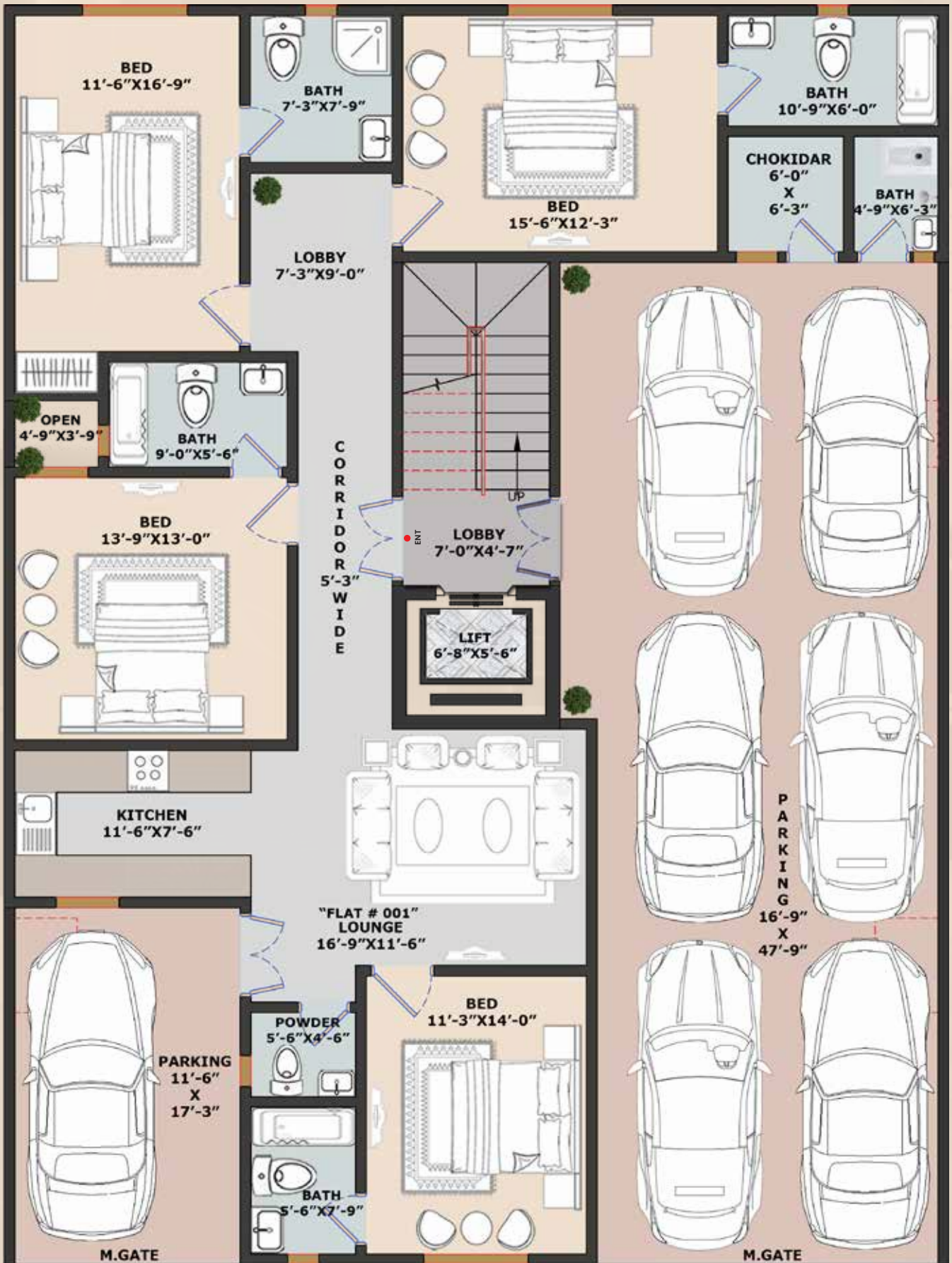




A photograph of a modern, multi-story apartment building. The building features balconies with ornate, dark metal railings. The facade is light-colored with large windows and glass doors. In the foreground, there is a paved area and some low-lying greenery. The overall image has a soft, slightly faded appearance.

APARTMENT FLOOR PLANS

GROUND FLOOR



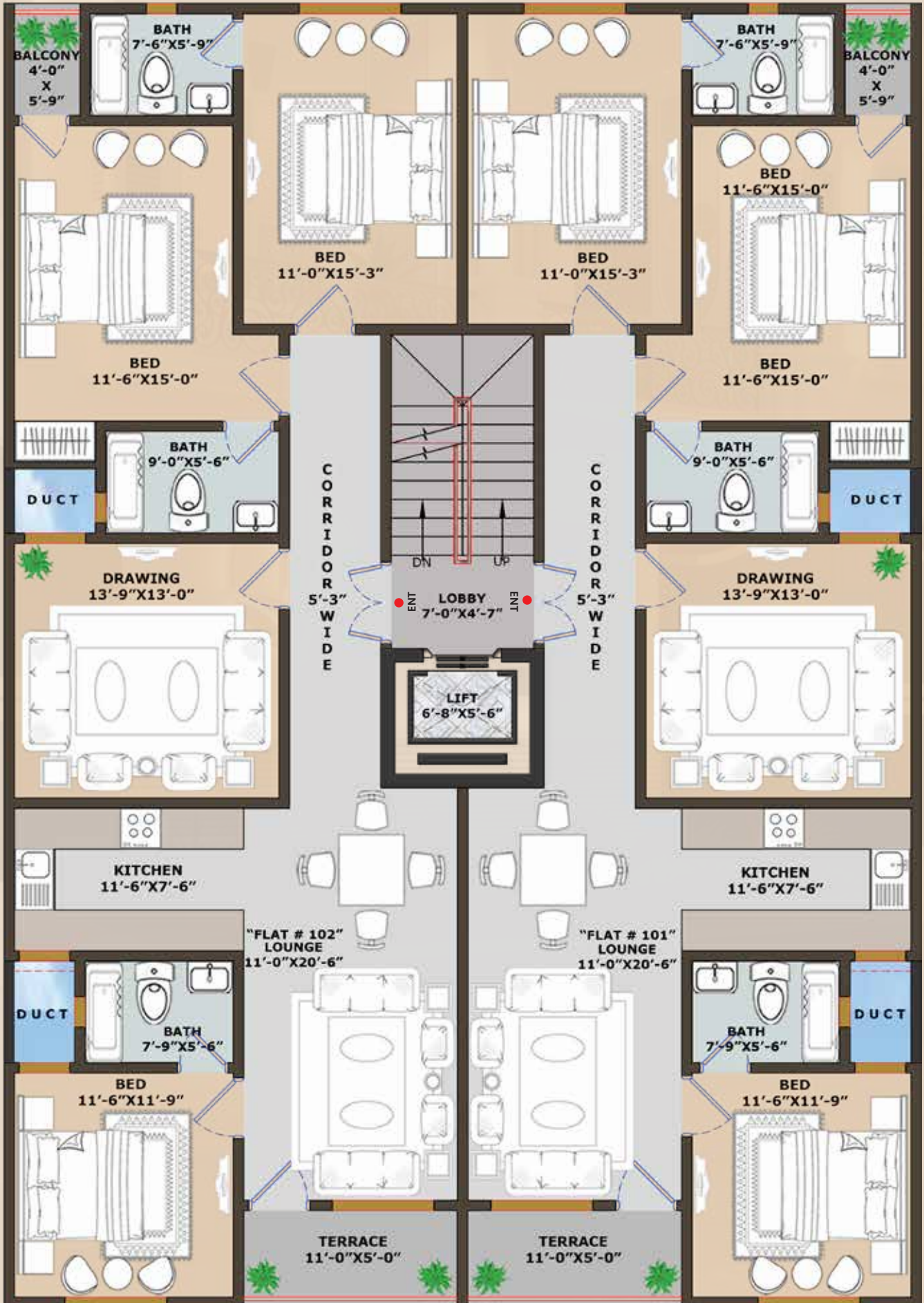
-----Road-----

GROUND FLOOR 3D PLAN



Disclaimer: Developer may modify layouts and floor plans without prior notice.

UPPER GROUND FLOOR



Disclaimer: Developer may modify layouts and floor plans without prior notice.

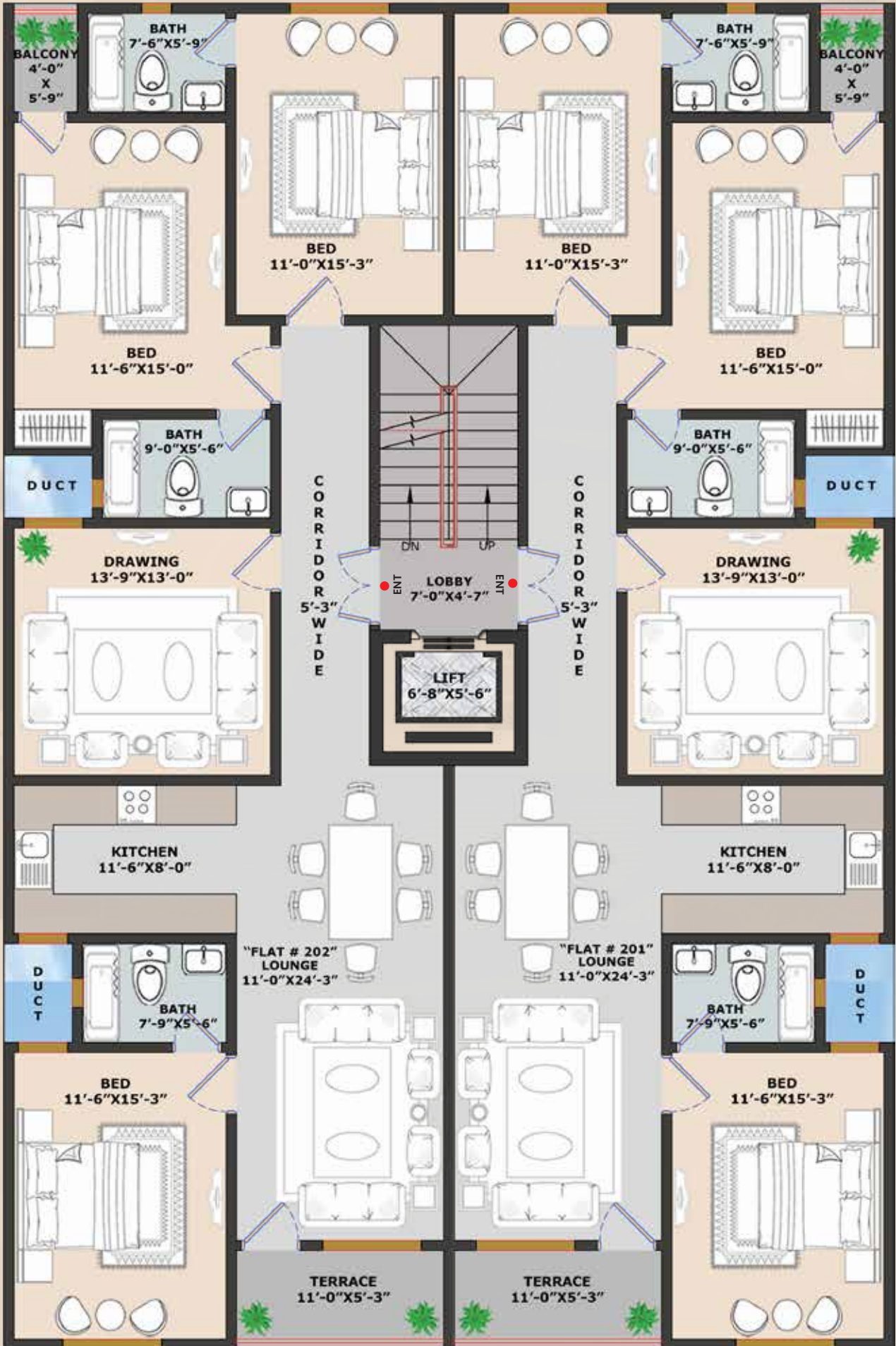
-----Road-----

UPPER GROUND FLOOR 3D PLAN



Disclaimer: Developer may modify layouts and floor plans without prior notice.

1ST & 2ND FLOOR



-----Road-----

1ST & 2ND FLOOR 3D PLAN



Disclaimer: Developer may modify layouts and floor plans without prior notice.

CLASSIC



A Project By:



BUILDERS & DEVELOPERS

Evergreen Classic is a flagship development by 3G Builders, a trusted name renowned for its reliability and excellence. With meticulously planned construction and a focus on timely delivery, the project is being executed with the highest quality standards, ensuring a seamless and dependable home-building experience.



EVERGREEN CLASSIC

A Project By:



BUILDERS & DEVELOPERS

Contact :
03 111 911116-7

Head Office :
Address. Suit # 402, Building no C-60,
21st Commercial ST, Phase 2 Extension , DHA, Karachi



www.3gbuilders.pk

Disclaimer: The views, plans and layout shown are artist's impression only. Evergreen Classic reserves the right to change these specifications, plans and amenities without prior notice. We assure that any such changes made will not, in any way, be detrimental to the quality of the building.